

\*\*\* NOT TO BE DISTRIBUTED OR COPIED WITHOUT PRIOR CONCENT OF PACIFIC BULLETPROOF \*\*\*

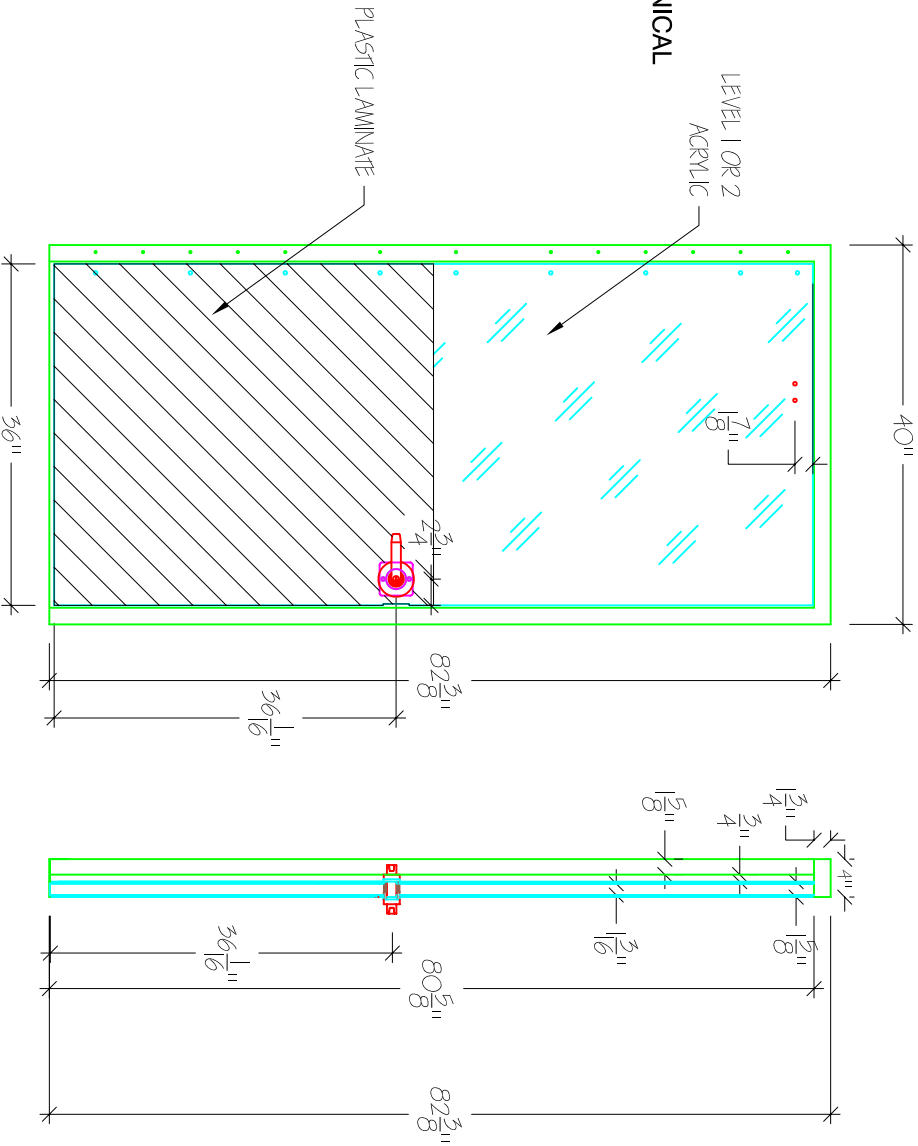
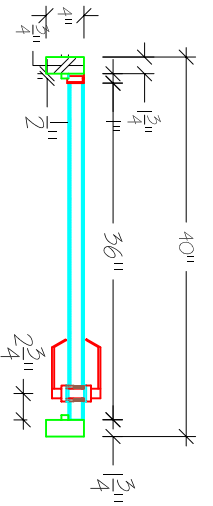
PART #: PBHVBRD  
PROTECTION LEVEL: 1,2

**NOTES:**  
ALL STANDARD DOORS ARE EQUIPPED WITH EITHER:

- SCHLAGE STOREROOM LOCK**
- ND80PD RHO 626
- SATIN CHROME COLOR
- 13-047 LATCH KD
- 10-025 STRIKE
- 1-5/8" TO 2-1/8" DR 2-3/4" BS
- 2 48-100 C SECT.

**OR**

- KABA L1000 SERIES MECHANICAL PUSHBUTTON LOCK**
- SATIN CHROME COLOR
- MODEL #: LR1021S-26D41
- SERIAL #: WH007600



**CUSTOMER APPROVAL:**

CUSTOMER SIGNATURE

**MANAGER APPROVAL:**

PACIFIC BULLETPROOF SIGNATURE

**PACIFIC BULLETPROOF CO.**

Specializing in Ballistic Products & Systems  
4035 Leaverton Court, Anaheim, Ca. 92807  
www.pacificbulletproof.com Tel. (714)630-5447 Fax (714)630-5314

**Project Name:** HALF VISION BULLET RESISTANT DOOR BULLET RESISTANT PANEL INSTALLATION

**Revision:**  
Revision:  
Revision:

**Drawn By:** TC  
**Scale:** NTS  
**Date:** 08/21/06

**Sheet No.**  
**PW**

\*\*\* NOT TO BE DISTRIBUTED OR COPIED WITHOUT PRIOR CONCENT OF PACIFIC BULLETPROOF \*\*\*