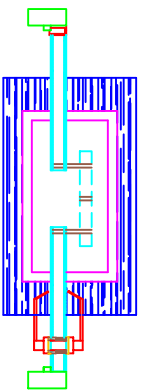


*** NOT TO BE DISTRIBUTED OR COPIED WITHOUT PRIOR CONCENT OF PACIFIC BULLETPROOF ***

TOP VIEW



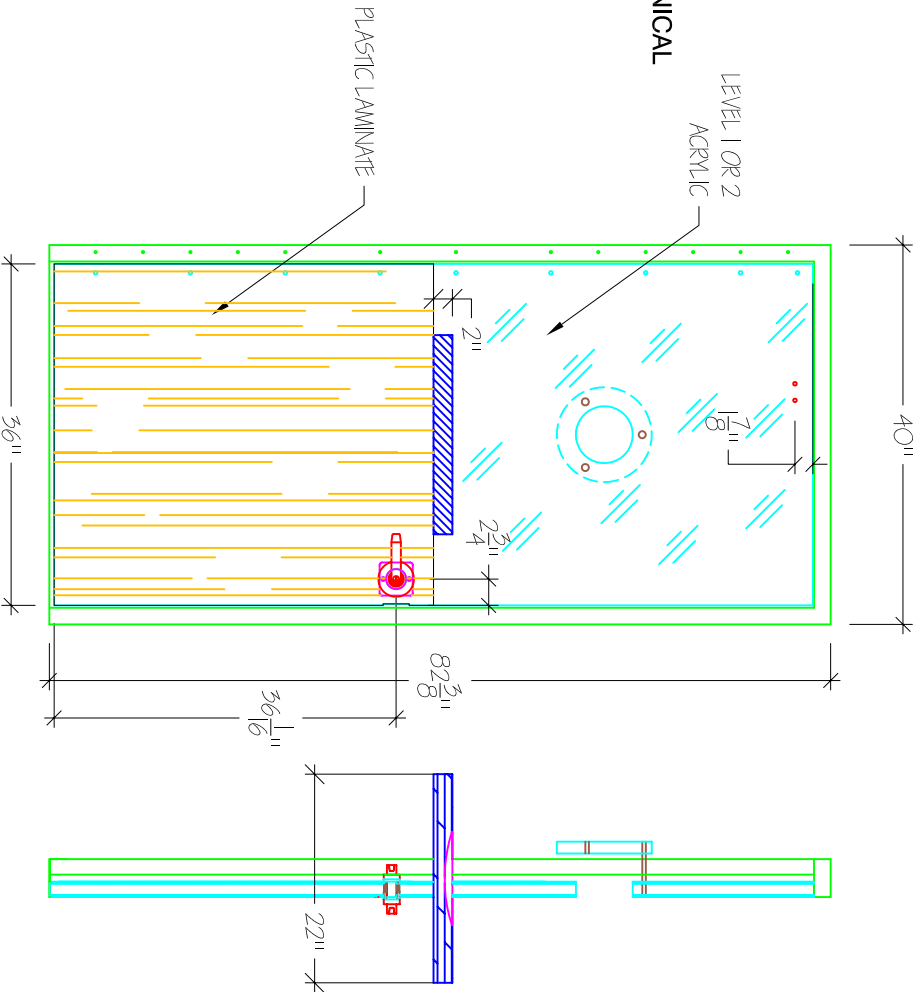
PART #: PBC1D3680-HV
PROTECTION LEVEL 1, 2

NOTES:
ALL STANDARD DOORS ARE EQUIPPED WITH EITHER:

- SCHLAGE STOREROOM LOCK**
- ND80PD RHO 626
- SATIN CHROME COLOR
- 13-047 LATCH KD
- 10-025 STRIKE
- 1-5/8" TO 2-1/8" DR 2-3/4" BS
- 2 48-100 C SECT.

OR

- KABA L1000 SERIES MECHANICAL PUSHBUTTON LOCK**
- SATIN CHROME COLOR
- MODEL #: LR1021S-26D41
- SERIAL #: WH007600



CUSTOMER APPROVAL:

CUSTOMER SIGNATURE

MANAGER APPROVAL:

DATE

PACIFIC BULLETPROOF SIGNATURE

PACIFIC BULLETPROOF CO.

Specializing in Ballistic Products & Systems
4035 Leaverton Court, Anaheim, Ca. 92807
www.pacificbulletproof.com Tel. (714)630-5447 Fax (714)630-5314

Project Name: HALF VISION BULLET RESISTANT TRANS ACTION DOOR
BULLET RESISTANT PANEL INSTALLATION

Revision:

Revision:

Revision:

Drawn By: TC

Scale: NTS

Date: 08/21/06

Sheet No. PW

*** NOT TO BE DISTRIBUTED OR COPIED WITHOUT PRIOR CONCENT OF PACIFIC BULLETPROOF ***