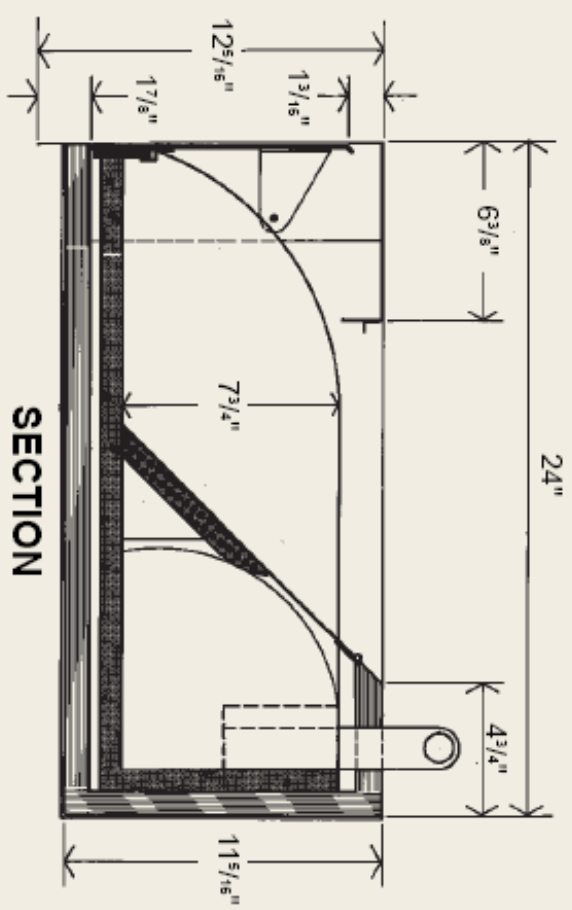
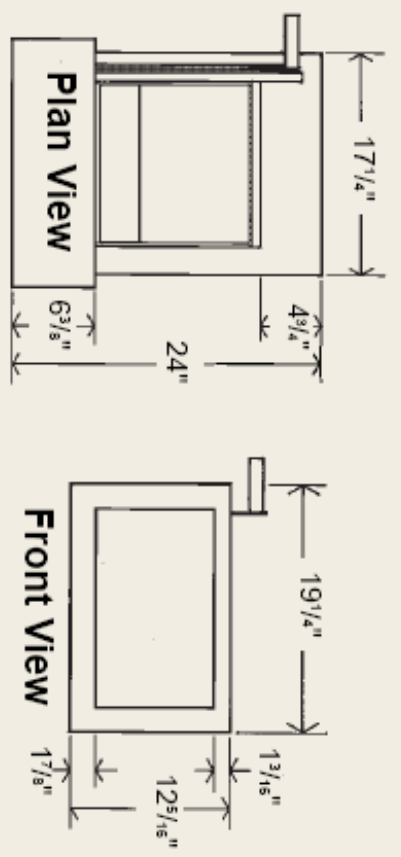


Transaction Drawer 1724-SCL

PART #: PBTD1724-SCL



Patented Transaction Drawer No. 1724-SCL has its lid and front door synchronized to open and close with no chance of the lid being left open when drawer is extended. As drawer closes, the lid returns to slanted position allowing operator's access to contents.

Drawer constructed of bullet resistant plastic. Housing is 3/4" exterior plywood with stainless steel on exposed surfaces. Face, hood, lid, handle and coin scoop are stainless steel.

Drawer has Class I bullet resistant protection.

Drawer extension: 14 1/4"

Wall opening size: 17 1/2" wide x 11 1/2" high.

CUSTOMER APPROVAL:

MANAGER APPROVAL:

CUSTOMER SIGNATURE

DATE

PACIFIC BULLETPROOF SIGNATURE

PACIFIC BULLETPROOF Co.

Specializing In Ballistic Products & Rooms
 4035 Leaverton Court, Anaheim, Ca. 92807
 www.pacificbulletproof.com Tel. (714)630-5447 Fax (714)630-5314

Project Name:	TRANSACTION DRAWER 1724-SCL
Project Description:	BULLET RESISTANT PANEL INSTALLATION

Revision:	Drawn By: TC	Sheet No.
Revision:	Scale: NTS	PW
Revision:	Date: 08/21/06	