

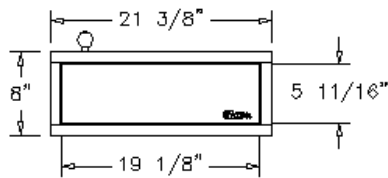
## Shuresafe® Model 670160 Double Hinged Security Drawer

### Product Description

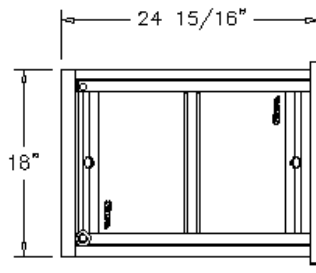
- ✓ Features a full length, low profile deal tray specifically designed for secure document, money and credit card transactions.
- ✓ Double-hinged lid prevents simultaneous customer and operator access to the transfer area for additional transaction security.
- ✓ Push-to-operate handle incorporates a self-contained locking mechanism for user safety.
- ✓ Units are finished in brushed stainless steel and shipped with some assembly required.



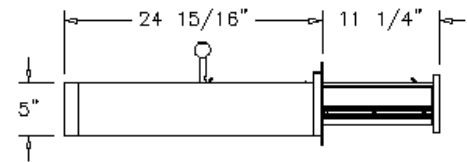
FRONT VIEW



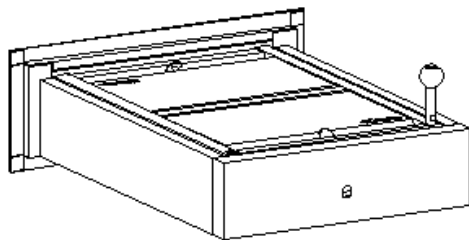
TOP VIEW



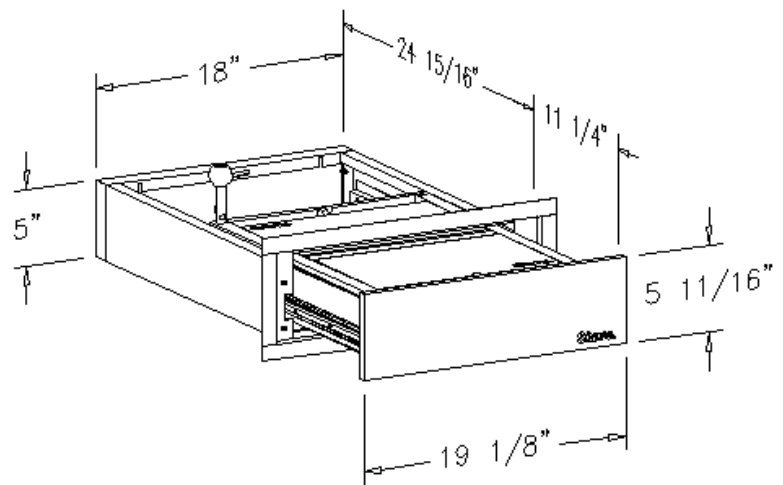
SIDE VIEW



Model	Overall Size			Frame Face		Transfer Area			Wall Opening		Wt.	Features
	W	H	L	W	H	W	H	L	W	H		
670160	18"	5"	24 15/16"	21 3/8"	8"	13 3/4"	2 3/4"	18 1/2"	19 11/16"	6 1/4"	62 lbs.	Double Hinged Lid



OPERATOR SIDE



CUSTOMER SIDE